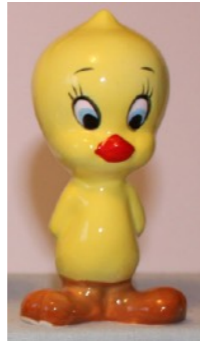




What's So Funny?



Cartoon shakers thru time



Back in 2007, I had a herniated disc, and had to spend 3 months in bed waiting for my operation to fix this. During this time, I decided to go on E Bay and get as many of the cartoon shakers I could find from the 2005 shakers book by Larry Carey and Sylvia Tompkins. How did I do? I got about 75 % of the shakers in the book. — has a copy of this for the presentation.

Felix the Cat – 1919



Felix the Cat was created in 1919 by Pat Sullivan and Otto Messmer. Most stars of the silent era didn't make survive the transition to sound, but Felix—who once shared screen-time with Charlie Chaplin—did just fine and remains an icon. An anthropomorphic black cat with white eyes, a black body, and a giant grin, he was one of the most recognized cartoon characters in film history. Felix was the first animated character to attain a level of popularity sufficient to draw movie audiences. Pictured here are three toys of Felix I have. The push up on the left is all in wood, and has FTOP Inc on it. I think this may come from the 40's to 50's. It is 4 ½" tall. The plastic Felix beside was made in China, and is 4" tall. The cloth Felix has no identifiers.



This row of Felixes from the left is a single shaker, from Germany , 1930's, about 2 " tall. Next to this single is a pair of google moving eyes German shakers, again from the 1930's , a little taller at 2 ½".



This pair of Felixes which come in both Black and White are from Japan in the 1950's, about 3 " tall.



The seated Felixes are from Taiwan, 1994, 3 ¼ " tall by Felix the Cat Productions. The taller pair of laughing Felixes are made in China, with the standing shaker being 5 ½ " tall.

1922 Bonzo the Dog



Bonzo the Dog is a fictional cartoon character first created in 1922 by British comic strip artist George Studdy. He was a white, chubby dog with a droopy face and saggy skin. He had big blue eyes and expressive ears which communicated his feeling to the audience through either film or sketch. He had one black ear and one white, some small black spots on his body, and a short, stubby tail.

Jane and I picked up a book called The New Bonzo Book by George Studdy. It is filled with cartoons from the 1920's of Bonzo, who many times was not a nice dog.

In the example cartoon on the right, Bonzo resolves to be a bad dog for the day, eats the cat food, smashes a doll, and then bites the first man he sees. This happens to be a thief, and for this he gets rewarded with a biscuit.



I am sure everyone has a Bonzo dog shaker set, but few may know the dog is 100 years old now. There are mostly happy Bonzo's, but here is a sad one. We also have a French one.



There are various Bonzo condiment sets.



Unfortunately these were in a really difficult spot to get at. I was able to photograph them behind the Plexiglas, but to get them out to determine origin and size was really hard.



The next two cartoon Characters were from the Fleischer Studios – called at the time Talk Artoons – the characters are Popeye and Betty Boop.

1929 - Popeye



Popeye was created in 1929 by E. C. Segar. Among the earliest icons of American animation, Popeye the Sailor became instantly beloved thanks to his wacky antics and superhuman strength upon downing a can of spinach. Here are two Popeye toys. On the left a celluloid walker from King Features, 6" tall, from the 1950's. On the right a Tricky Trapeze Toy from the 1960's from Hong Kong.



Here are three hand puppets from the 1950's - Wimpy, Brutus, and Olive Oyl. Brutus was originally called Bluto, but in 1957 was changed to the name Brutus due to potential copyright infringement.



Story time. Many years ago, we were just building up our collection of shakers and at that time did not have any of the older Popeyes. One day we were driving up to the cottage, where we saw a garage sale with shakers at the side of the road. We talked to the person, who said they had more at their lodge on Jack's Lake. They had an older Popeye, which they wanted big bucks for. However, they also collected Pez's. I had found an old Pez in a basket of toys from my youth. The picture shows the Pez in an advertisement. I had the astronaut but it did not have the helmet. In the end, we traded my Pez for the shaker pair and we got the one on the left. Who got the better deal?

Since then we got two more similar shakers – the one in the middle is coloured differently 4 " high, the one on the right is 3 " tall.



Popeye's exploits are also enhanced by a few recurring plot elements. One is the love triangle among Popeye, Olive, and Bluto, and Bluto's endless desire to claim Olive at Popeye's expense. Popeye tries to overcome any obstacle to please Olive, who often (if temporarily) renounces Popeye for Bluto. Swee'Pea is Popeye's ward in the comic strips, but he is often depicted as belonging to Olive Oyl in cartoons.

Here you see two older sets of Popeye, both made in Japan about 3 " high.



Popeye and Sweet Pea in a boat – Made in Japan, 1980. 3 ½" high. Beetle Bailey on a tank, with Popeye on the ship, made in China, 2012, T.M. Hearst.



Wimpy with his proverbial hamburger which he wants to pay for tomorrow, Sweet Pea on Life Preservers, and Olive Oyl looking at Popeye's picture on a chair are all 2012, 4" high, China, and T.M. Hearst.



The heads on left are huge – 5 inches tall. The cartoon pair on the right we picked up in Florida this year, showing Popeye's Grandma and Brutus.



This pair I thought was quite unique. Olive is just part of the magnetic stand to separate the shakers Popeye and Brutus.



There are many more new Popeye shakers. On the left Popeye and Olive Oyl are 4 1/2 " high, made in Taiwan in the 1990's. Popeye and the can of spinach is also made in Taiwan, 1995, with Popeye 5 " tall.

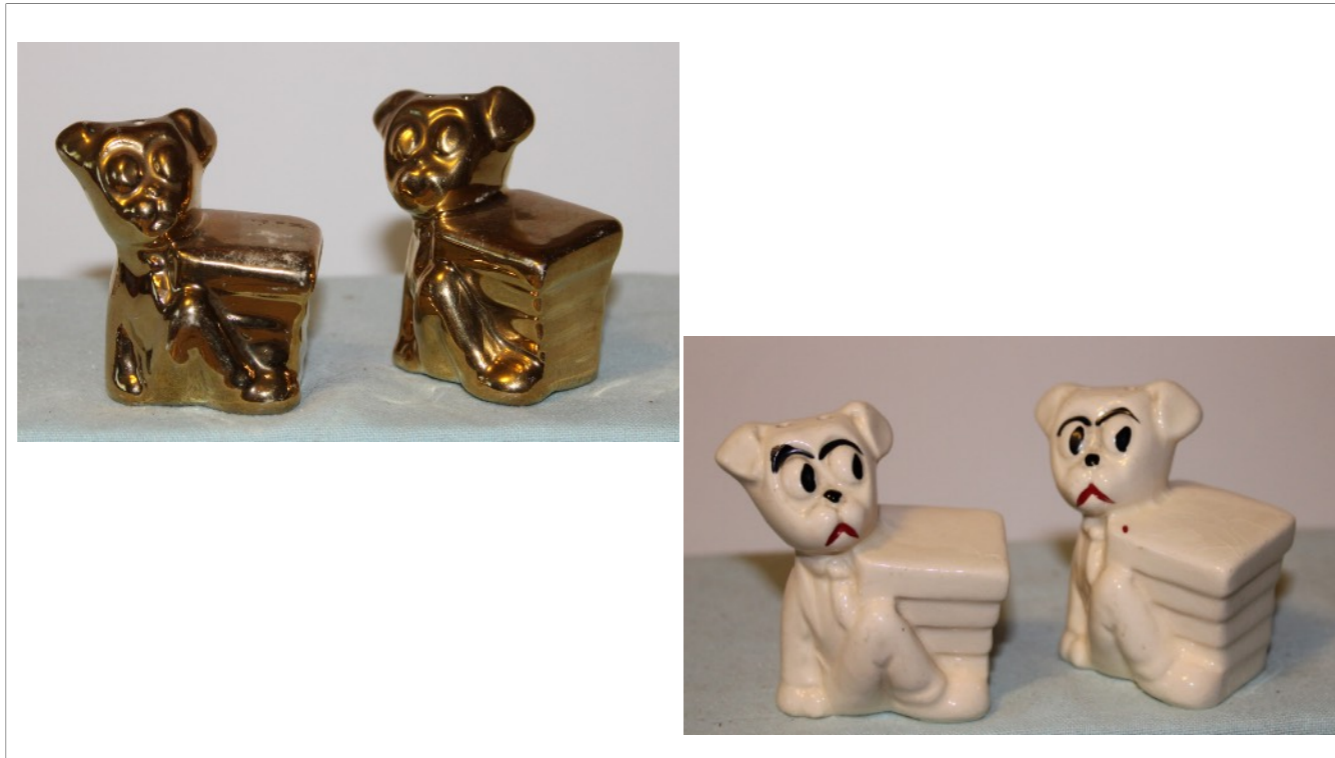


Here are two Popeye egg cups made in Japan, 2 and 3 " tall. They are probably from the 1930-1940's.

1930 – Betty Boop



Betty Boop was created in 1930 by Max Fleisher and Grim Natwick. She made her debut in Dizzy Dishes. Bimbo later featured as her dog appeared first. In her early cartoons, Betty looked more like a dog than a person (on the left). Her dog ears turned into earrings as she was changed into a flirtatious vamp. Though Betty seems like a product of the Roaring '20s, it's important to remember that she was actually the Queen of the Depression Era, a sexy reminder of better times and an avatar for a younger generation.



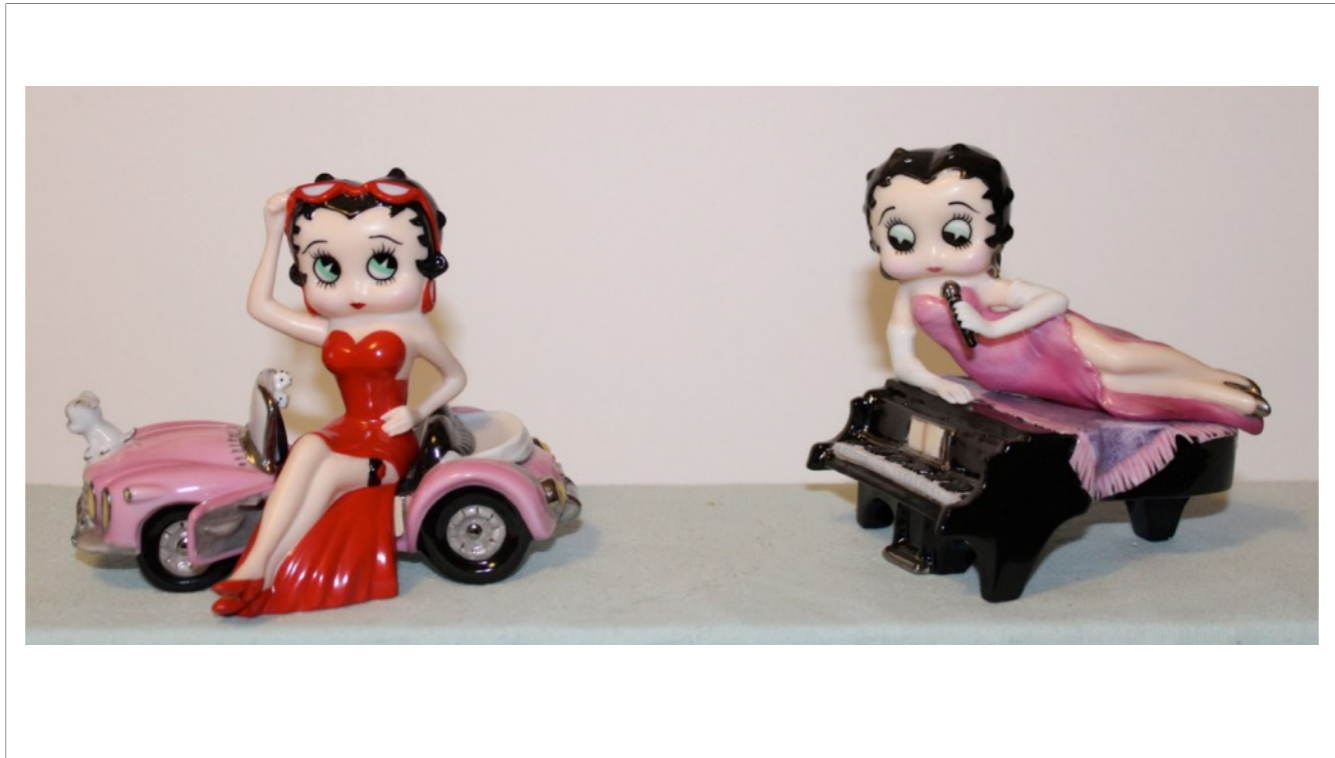
Some of the earliest shakers were of Bimbo holding a stack of books. 2 ½", 1930's from USA. In either gold colour, or white with black accents.



Vandor produced some of the earliest Betty Boop shakers. Betty and Bimbo in the boat were from Vandor, produced in 1993 made in the Philippines, 3 1/2" high.



Betty as a waitress on roller skates serves Bimbo in the car. Vandor, 1985, Japan, 4 1/2".



These two shakers are part of a limited series of 6 from the Hearst Corporation. The car called "Booped in Glamour" was produced in China in 1999. The Baby Grand Betty came out in 2000.



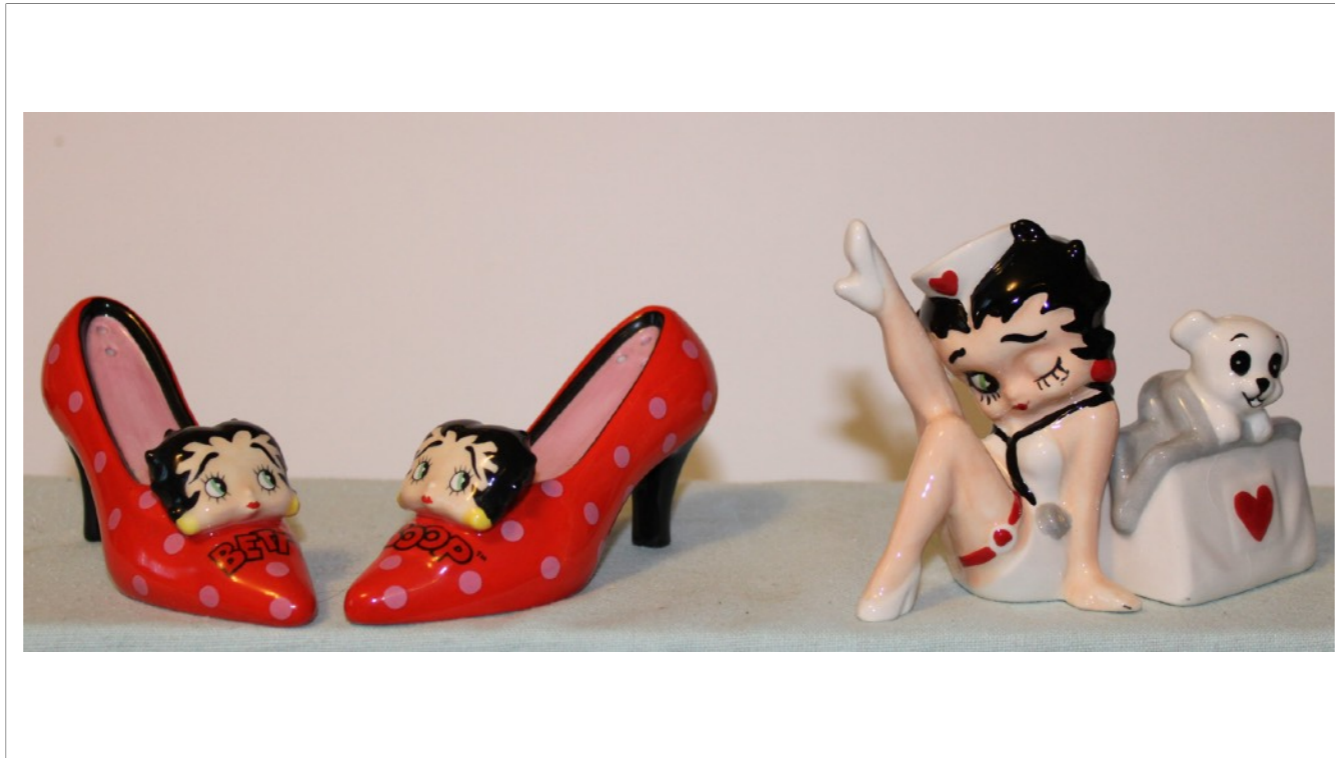
The heads on the left are from China, 2 1/2 " tall. The pair on the right is only marked KFS/FS China, 3 " tall.



The sit – upon on the left is 6 " tall, and the one on the right is made in Taiwan, copyright Hearst in 1995.



Betty and Bimbo on the left on her name are 4 " tall, from Vandor in 2002, made in China. The photographer is an Enesco product 4 ½ " tall, made in China in 2000.



The shoes on the left are 2 1/2" tall, from China again with the KFS/KS logo as is the 3 1/2" pair on the right.



There were so many shakers of Betty to chose from. The 4 " Frankenstein Girl – O – Matic on the left was made in Sri Lanka in 1999. The Angel and Devil magnetic pair on the right are 4 " tall, Hearst, from China.



The founders of Warner Brothers Studios started at the same time and place as Walt Disney – Kansas City. To promote their cartoons they needed a tie – in to the music from WB feature films, so Looney Tunes began in 1930 in black and white. From 1933 to 1944, Merrie Melodies were produced by Leon Schlesinger, then sold to Warner Brothers and renamed Warner Brothers Cartoons. My first meeting with all the characters was in comics that I bought in the late 1950's and early 1960's. Then later, there was the Bugs Bunny hour of Looney Tunes on Saturday at 5:00 at our local TV Station where we saw all their antics.

1936 – Porky Pig



Gold Diggers of 49 released in 1936 was the first appearance of Porky Pig. He is known for his signature line at the end of many shorts, "Th-th-th-that's all, folks!" Mel Blanc created and portrayed the voices of many Warner Brothers characters. The first pair of Porky shakers are 5 " tall, made in USA by American Pottery in the 1950's.



Here we have Porky and Petunia hugging S and P letters. They are 3 " high, made in the USA in the 1950's.



Porky as a cobbler with a boot is \$ ' high, made in Japan in the 1950's.



Here we have two shakers with Petunia on the scale. The one to the left, is 4 1/2" tall, made in Japan in the 1950's. The shaker on the right is similar size, made by Vandor in 1989 from the Philippines.



The first issue of Looney Tunes characters was in the 1970's from Warner Brothers. All these shakers are 4" high and marked Warner Brothers. However, we have seen some of these marked incorrectly with Walt Disney. The first shaker of this series we saw was in an auction sale in Lindsay where one set went for \$40 - Jane and I wondered which set this was - it was the first Bugs! The most difficult one to find of this set is the Tweety, which we did not find for many years. Then we found two pair in a very short time

1937 – Daffy Duck



Daffy Duck first appeared in the short "Porky's Duck Hunt" in 1937. He was one of the first of the new "screwball" characters that emerged in the late 1930s to replace traditional everyman characters who were more popular earlier in the decade, such as Mickey Mouse and Popeye. Daffy starred in 130 shorts in the [golden age](#), making him the third-most frequent character in the *Looney Tunes/Merrie Melodies* cartoons, behind Bugs Bunny's 167 appearances and [Porky Pig's](#) 153 appearances. The set shown on the right has three characters – Bugs on the left, Elmer in the middle (not a shaker), and Daffy on the right. This is entitled "Hunting Season" with magnets holding the characters together, made in China and 3 ½ " high.



Daffy was really crazy about money. The pair on the left is made in China in 1996, and is 6 " high. The pair on the right is trademarked WB, made in China and is magnetic and 4 " high.

1937 – Elmer Fudd



Elmer Fudd was also introduced in 1937. His aim is to hunt Bugs, but he usually ends up seriously injuring himself and other antagonizing characters. He speaks in an unusual way, replacing his Rs and Ls with Ws, so he often refers to Bugs Bunny as a "scwewy" or "wascawwy (rascally) wabbit". Elmer's signature catchphrase is, "Shhh. Be vewy vewy quiet, I'm hunting wabbits", as well as his trademark laughter. This shaker pair with Elmer and Bugs at a soda fountain is quite large, with Bugs at 7". It was made in China in 1994.



This set with Elmer again hunting Bugs is made in China, and 4 " tall.

1939 - Sniffles



Sniffles debuted in the short [Naughty but Mice](#) in 1939. Sniffles' head is almost as large as his body. He has large, baby-like eyes, a small bewhiskered nose, and a perpetual smile.

The shaker pair was made in the USA in the 1950's and is 3 ½ " tall.

1940 – Bugs Bunny



It was in 1940 in "Wild Hare" when Bugs Bunny debuted with his famous , "Eh, What's up Doc?" Bugs is an anthropomorphic gray and white rabbit or hare who is famous for his flippant personality. He is also characterized by a Brooklyn accent. Due to Bugs' popularity during the golden age of American animation, he became not only an American cultural icon and the official mascot of Warner Bros. Entertainment, but also one of the most recognizable characters in the world. He can thus be seen in the older Warner Bros. company logos. The first shaker pair is Bugs with Gossamer. Issued in 1993, from China, and is 7 " tall.



Bugs as Carmen Miranda is a classic. Made in China in 1995, it stands 6 ½ " tall.



On the left is Bugs and the boxer – this is 7 ½" high, made in China in 1996. Bugs and the carrot are Treasure Craft shakers from the 1960's USA, and 4 " tall.

1942 - Tweety Bird



1945 – Sylvester the Cat



The name "Tweety" is a play on words, as it originally meant "sweetie", along with "tweet" being an English onomatopoeia for the sounds of birds. His characteristics are based on Red Skelton's famous "Junior the Mean Widdle Kid."

Sylvester James Pussycat, Sr. official first appearance was in "Life with Feathers" in 1945. Most of his appearances have him often chasing Tweety, Speedy Gonzales, or Hippety Hopper. He appeared in 103 cartoons in the [golden age of American animation](#) and three of his cartoons won Academy Awards.



There are many Tweety and Sylvester Shakers. This pair of the right with Tweety and Sylvester travelling was made in China in 2000 with the WB logo, and is 4 ½ " tall.



1950 - Granny

Sylvester is always getting in trouble with Tweety – the fun on the beach is from 1999 Thailand, and 5" tall.
Emma Webster, better known as Granny, is a Warner Bros. Cartoons character created by Friz Freleng in 1950. She is the owner of Tweety (and more often than not, Sylvester and Hector, the Bulldog).
The shaker pair on the right has Granny again accusing Sylvester who has hidden Tweety behind his back. Made in the 1990's by China, it stands 6 1/2" tall.



There are so many Tweety shakers, it is hard to pick one. This ginger bread pair is double sided, made in China in 1997 and 5 " tall.

1945 - Pepé Le Pew



Pepe was introduced in 1945 in the short called For "Senti Mental Reasons". Depicted as a French striped skunk, Pepé is constantly on the quest for love. However, his offensive skunk odor and his aggressive pursuit of romance typically cause other characters to run away from him.

This shaker pair expresses the desire of Pepe for Penelope's love. The pair is entitled "Pepe and Penelope in Love", made in China, and 4 " tall.



The pair on the left shows the wedding couple, Pepe and Penelope. Made in China in 1999, it is 4 ½ " tall. The pair on the right is magnetic, holding Penelope's hat to this head. It is also made in China and 4" tall.

1945 - Yosemite Sam



Yosemite's first appearance was in the short called "Hare Trigger". Yosemite Sam takes his name from Yosemite National Park. He is an adversary of Bugs Bunny. He is commonly depicted as an extremely aggressive, gunslinging outlaw or cowboy with a hair-trigger temper and an intense hatred of rabbits, Bugs in particular.

The pair on the right is a magnetic pair, joined at the hat. It was made in China and has a Turner Entertainment label on it. It is 4 1/2" tall.



Here are Sam and Bugs in happier times. This pair was made in 1993 for Warner Brothers, in China and is 5 1/2 " tall.

1946 – Foghorn Leghorn



Foghorn Leghorn was directly inspired by the character of Senator Claghorn, a blustery Southern politician played by Kenny Delmar on Fred Allen's popular 1940s radio show. Foghorn adopted many of Claghorn's catchphrases, such as "I say.." and "That's a joke, son!" Delmar's inspiration for Claghorn was a Texas rancher who was fond of saying this.

The shaker on the right shows Foghorn shaking hands with Barnyard Dog. It was produced in 1990, in Taiwan, and is 5" high.



Here Foghorn Leghorn meets his match in Henery Hawk. Make in China, and 3 " tall.

1948 – Marvin the Martian



Marvin made his debut in the 1948 cartoon "Haredevil Hare". He regularly attempts to destroy Earth, often for petty reasons such as wanting a better view of Venus. He frequently appears as a villain in cartoons and video games, and wears a helmet and skirt. Marvin's design was based on the Hoplite style of armor usually worn by the Roman god Mars. "That was the uniform that Mars wore — that helmet and skirt. We thought putting it on this ant-like creature might be funny. But since he had no mouth, we had to convey that he was speaking totally through his movements. It demanded a kind of expressive body mechanics.

The shaker on the right was made in 1993 in China for Warner Brothers. It is 4 " tall.



The shaker pair on the left shows Marvin with his dog, K-9. It was made in 1995 in Taiwan for Warner Brothers and is 5 " tall.
The squished pair in the flying saucer was made in China, and is 4 " tall.

1949 – Wile E. Coyote and the Roadrunner



Wile E. Coyote debuted with his frequent adversary, Road Runner, in 1949's "Fast and Furry-ous". Charlie Brown will never kick his football, and Wile E. will never catch the Roadrunner. These are among the first truths learned by any kid in America, even as they're exposed to the beauties of the Western desert. His clever plans and box of oft-malfunctioning ACME tricks resulted in our favorite coyote falling off cliffs, getting crushed by stones, and at the center of crater-inducing explosions; no cartoon character suffered more for our entertainment. Jane always wished just once he caught the Roadrunner.

The shaker pair on the right is a magnetic pair made in China and is 3 ½ " tall.



This pair was made in 1993 for Warner Brothers in China. It is 5 1/2 " tall.

1953 - Speedy Gonzales



Speedy's Gonzales first appearance was in 1953's [Cat-Tails for Two](#) . He is portrayed as "The Fastest Mouse in all Mexico" with his major traits being the ability to run extremely fast, speaking English with an exaggerated Mexican accent, and also speaking in Spanish. He usually wears a yellow sombrero, white shirt and trousers (which was a common traditional outfit worn by men and boys of rural Mexican villages), and a red kerchief.

On the right is a pair from China, magnetic, and 3 ½ " tall.



This pair was also made in China in 1999. It is 4 ½ " tall.

1954 – Tasmanian Devil



Taz appeared in his first cartoon in 1954, in "Devil May Hare". Though he can be very devious, he is also sweet at times. His enormous appetite seems to know no bounds, as he will eat anything in his path. He is best known for his speech consisting mostly of grunts, growls, and rasps (in his earlier appearances, he does speak English with primitive grammar) as well as his ability to spin like a vortex and bite through nearly any thing. Taz does have one weakness: he can be calmed by almost any music. In 2016 we went to Tasmania on a boat cruise and saw the little devils in a zoo. Once having tasted meat they are extremely vicious and can tear off your arm, although they are the size of a small dog.



These baseball Tazes are from Warner Brothers, made in China and 4 ½ " tall.



"Wedding Bliss" pair was made in 1997 in China and stands 5 1/2" tall.



Taz on the left leaning on his Motorcycle is from WB in 1994, made in China, and 5 " tall. The Dallas Football Tazs on the right is one of a series of different Football teams. It was made in 1994, in China.

Walter Lantz Studios

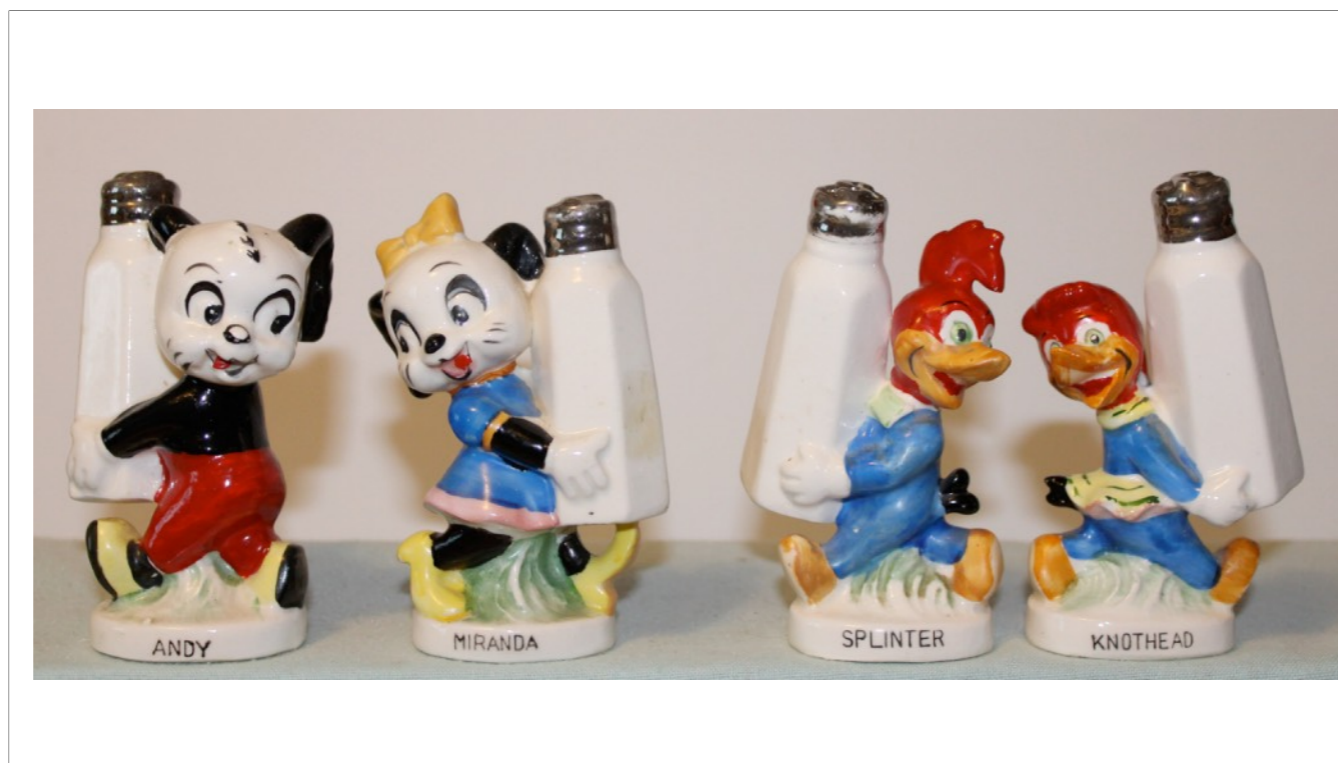
1940 - Woody Woodpecker



Walter Lantz Productions was an American [animation](#) studio. It was in operation from 1928 to 1972 and was the principal supplier of animation for [Universal Studios](#).

Woody Woodpecker first appeared in the short "Knock Knock" in 1940. Woody shares many characteristics in common with the pileated woodpecker in terms of both physical appearance as well as his characteristic laugh, which resembles the call of the pileated woodpecker. Many people tried out for his voice, but in the end, Walter's wife Grace took the job.

The pair of shakers on the right were made in the USA in the 1960's, copyright WL. They are 4 " tall.



A series of six pairs of shakers featuring Walter Lantz characters was issued in 1958, called "Woody Woodpecker and his friends, salt and pepper shakers". National Potteries of Cleveland Ohio were licensed for production. They were made in Japan and are 4" tall. On the left are Andy (first appeared in 1939) and Miranda Panda, and on the right Splinter and Knothead, Woody's cousins.



On the left are Home Pigeon (first appeared in 1942) , and Charlie Chicken. To the right is Chilly Willy and Oswald Rabbit. Chilly is the penguin who is always cold. Oswald Rabbit was created by Walt Disney in 1927 but he did not have copyright for this character. This lead to the creation of Mickey Mouse.



On the left is Wally Walrus with Windy Bear. On the right are Woody and Winnie Woodpecker. A few years ago, we had all of this series except Woody and Winnie. I came across a collection that was recovered from a run – down wrecked house. The heirs of the property took all the shakers and put them into boxes, barrels, etc. We bought about 6 thousand singles and Jane spent months, cleaning and sorting them out. In the end, we went back to the heirs who had found more singles in all the furniture and one of the sets we found in their kitchen was Woody and Winnie, which we brought home.

**Metro-Goldwyn-Mayer
Cartoon Studio - 1937 to
1957**



The **Metro-Goldwyn-Mayer cartoon studio** was the in-house division of [Metro-Goldwyn-Mayer](#) (MGM) during the [Golden Age of American animation](#). Active from 1937 until 1957, the studio was responsible for producing [animated shorts](#) to accompany MGM feature films in [Loew's Theaters](#). In 1957, the studio closed and Hanna Barbera took most of the staff and started their own Studio.



This series of character shakers from the MGM Studios came out in the 1950's. They are all heads of some of the famous characters. They were about 2 " high and made in Japan.

Top picture - Pepe Donkey, Screwie Squirrel - created in 1944, Tom - created in 1940. Bottom picture - Droopy Dog - created in 1943, Barney Bear - created in 1939, Spike - 1942. The most difficult one to find was Barney Bear, we searched for years. Then within two weeks, we found two pair.

1940 - Tom and Jerry



Tom and Jerry were created in 1940 by Hanna Barbara. The series features comic fights between two lifelong enemies, a cat (Tom) and a mouse (Jerry). The plots of each short usually center on Tom and Jerry causing mayhem and destruction, as they antagonize each other. The shaker pair to the right is Tom and Jerry, made in the 1960's, 3 1/2", with foreign label on bottom.



The shakers on the left are Jerry, made in Japan, 2 1/4" tall. On the right is a magnetic Tom and Jerry made in China, and 4 " tall.

Hanna - Barbera Productions

1958 - Huckleberry Hound



Hanna Barbera was founded on July 7, 1957, by [Tom and Jerry](#) creators and former [MGM cartoon studio](#) staff [William Hanna](#) and [Joseph Barbera](#).

Huckleberry "Huck" Hound was created in 1958. He is a fictional cartoon character, a blue anthropomorphic coonhound that speaks with a North Carolina Southern drawl. He first appeared in the series *The Huckleberry Hound Show*. The simple Huckleberry hound toy is just a plastic figurine, about 7 " tall.



The shaker on the left with Huckleberry in the car is trademarked Hanna Barbera, made in China, a magnetic pair and about 4 1/2" tall. On the right are the Pink Panther and Huck are made in China,, 4 1/2" tall, and magnetic.

The Pink Panther is a fictional animated character who appears in the opening and/or closing credit sequences of every film in The Pink Panther series except for A Shot in the Dark and Inspector Clouseau. In the storyline of the original film, the "Pink Panther" is the name of a valuable pink diamond named for a flaw that shows a "figure of a springing panther" when held up to the light in a certain way; in the credits this was translated to an animated pink panther. Should I put one more pair of Pink Panther?

DePatie Freleng
/United Artists Cartoons

1963
The Pink Panther



Here is the Pink Panther introduced in 1963 by United Artists. The Pink Panther is a fictional animated character who appears in the opening and/or closing credit sequences of every film in The Pink Panther series except for A Shot in the Dark and Inspector Clouseau. In the storyline of the original film, the "Pink Panther" is the name of a valuable pink diamond named for a flaw that shows a "figure of a springing panther" when held up to the light in a certain way; in the credits this was translated to an animated pink panther.

Hanna - Barbera
Productions

1958 - Yogi Bear



Back to Hanna Barbera Productions. Yogi made his debut in 1958 as a supporting character in [The Huckleberry Hound Show](#). The plot of most of Yogi's cartoons centered on his antics in the fictional Jellystone Park, a variant of the real Yellowstone National Park. Yogi, accompanied by his constant companion Boo-Boo Bear, would often try to steal picnic baskets from campers in the park, much to the displeasure of Park Ranger Smith. Yogi's girlfriend, Cindy Bear, sometimes appeared and usually disapproved of Yogi's antics.

The wooden shaker pair on the right was probably made in the 1960's in the USA.



The shaker pair on the left feature Yogi and Boo – Boo in a canoe. It is a magnetic pair, made in China and 4 " tall. The pair on the right features Yogi and Cindy Bear. They too are 4 " tall, magnetic, and made in China.



The final Yogi and Ranger Smith pair in the picnic area are also magnetic, made in China and 4 ½" tall.

1960 - Fred Flintstone



Fred Flintstone is the main character of the animated sitcom *The Flintstones*, which aired during prime-time on ABC during the original series' run from 1960 to 1966. Fred is the husband of Wilma Flintstone and father of Pebbles Flintstone and together the family live in their homely cave in the town of Bedrock. His best friend is his next-door neighbor, Barney, who has a wife named Betty and an adopted son, named Bamm-Bamm.

Fred lives in the fictional prehistoric town of Bedrock, a world where dinosaurs coexist with modernized cavepeople and the cavepeople enjoy "primitive" versions of modern conveniences such as telephones, automobiles, and washing machines. Fred's trademark catchphrase yell is "yabba dabba doo!", a phrase that was originally his club's cheer.

The two push – up toys on the right feature Fred and Dino, were made in the 1960's, 4 " tall, and made in Hong Kong.



These two plastic cups are from 1968. They were promos from Flintstone Multiple Brand Vitamins, 3 1/2" tall. Shown here are Fred and Pebbles.



This pair of shakers of Bamm Bamm and Pebbles were produced in the 1960's in the USA and are 4" tall.



There are many shakers of the Flintstones. Here are three different types of shakers of the Flintstones. The one on the left where Fred and Barney are wearing their lodge hats is 5" tall, made in China in the 1990's. The middle pair are a plastic Fred and Barney, made by Lootcrate in 2020, by China, and are 3 " tall. The pair on the right are egg style shakers of Wilma and Fred, They are 2 ½" tall and made in China.

1962 - The Jetsons



The Jetsons started in 1962. The Jetsons live in a comical version of a century in the future, with elaborate robotic contraptions, aliens, holograms, and whimsical inventions. George Jetson lives with his family in the Skypad Apartments in Orbit City; his wife Jane is a homemaker, their teenage daughter Judy attends Orbit High School, and their son Elroy attends Little Dipper School. Housekeeping is seen to be by a robot maid named Rosie who handles chores not otherwise rendered trivial by the home's numerous push-button Space Age-envisioned conveniences. The family has a dog named Astro. The shaker pair on the right has the maid Rosie vacuuming their apartment. It is 4 ½" tall, made in 1993 by China.



George and Jane Jetson are on the left in the flying saucer. It was made in China, is magnetic and is 3 1/2" tall. On the right Elroy and his son and Astro are 4" tall, also magnetic and made in China.

1987 -The Simpsons



The Simpsons is an American animated sitcom created by Matt Groening in 1987 for the Fox Broadcasting Company. The series is a satirical depiction of American life, epitomized by the Simpson family, which consists of Homer, Marge, Bart, Lisa, and Maggie. The show is set in the fictional town of Springfield and parodies American culture and society, television, and the human condition.

Homer, the father, works as a safety inspector at the Springfield Nuclear Power Plant, a position at odds with his careless, buffoonish personality. The few times that I watched this I always cringed when Homer indicated he was a Technical Supervisor in a Nuclear Power Plant - the same position I had.

This set of shakers has the whole family watching TV. Homer, Marge and Maggie are on the couch, with the hair making this set 8" tall. Bart and Lisa sit beside. The couch is labelled Treasure Craft, 1996 made in China.

The End

There are lots I did not include – Casper, Lil Abner, Peanuts, Jim Henson, Sad Sack, Mighty Mouse, Pogo, Kassenjammer Kids, Chalkware sets, and all the Action Comic heros for DC and Marvel



Well, that is the end of my presentation. There are still many more comic characters I did not include - . Here you see me standing in front of the cabinet that houses all our Cartoon Characters. It is 8 feet high and 4 feet wide. The ten shelves are 16 inches wide. It has a swinging door with Plexiglas to protect all the shakers. Yes, we do need a step ladder to access the upper shelves.